



PRODUCT INFORMATION

The LSRA-SB is a backbox used to surface mount the LSRA(-C). The backbox along with the LSRA can be mounted above finished floor in accordance with local and/or national code requirements.



SPECIFICATIONS

Dimensions

Width: 8.5 in. (21.59 cm)
Height: 5.75 in. (14.50 cm)
Depth: 2.0 in. (5.08 cm)

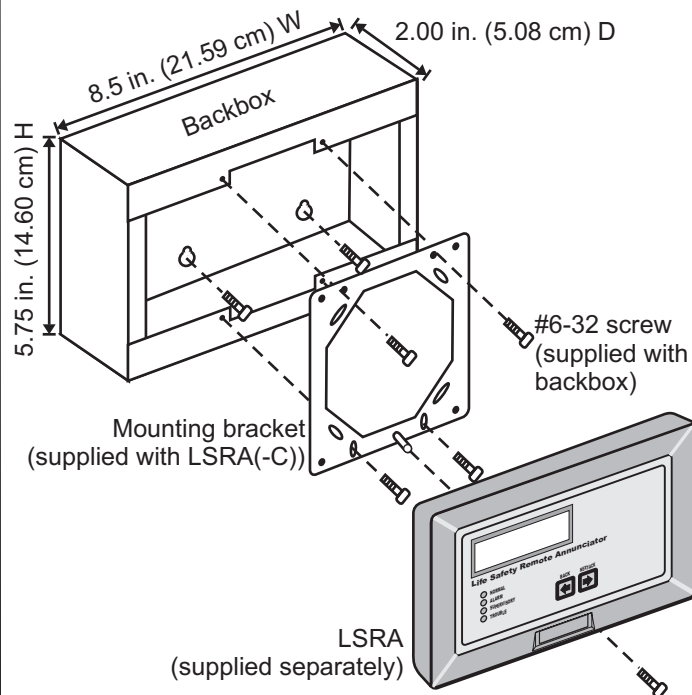
Wiring: All wiring **MUST** be power limited

Knockouts: Place where needed leaving enough space to attach conduit fitting nut

Finish: Textured white

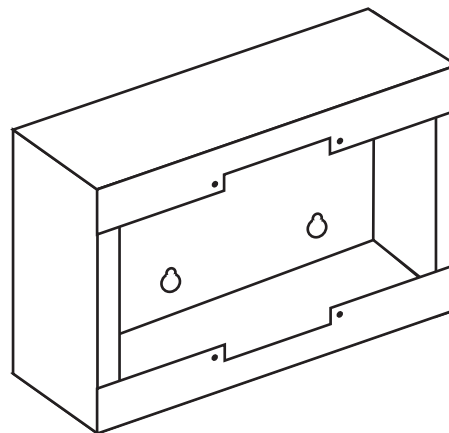


INSTALLATION



Note: Backbox mounting screws and anchors must be purchased separately.

PRODUCT DIAGRAM



INSTALLATION SHEET

LSRA-SB Surface Mount Enclosure

INSTALLATION SHEET P/N: 387623

FILE NAME: 387623.CDR

REVISION LEVEL: 1.0

APPROVED BY: K. Johnson

DATE: 07/10/00

CREATED BY: D. Miner

A UNIT OF GENERAL SIGNAL



GS BUILDING SYSTEMS CORPORATION

GS BUILDING SYSTEMS CORPORATION

6411 Parkland Drive
Sarasota, FL 34243
USA

625 6th Street East
Owen Sound, Ontario
Canada N4K 5P8

OFFSET SPEC

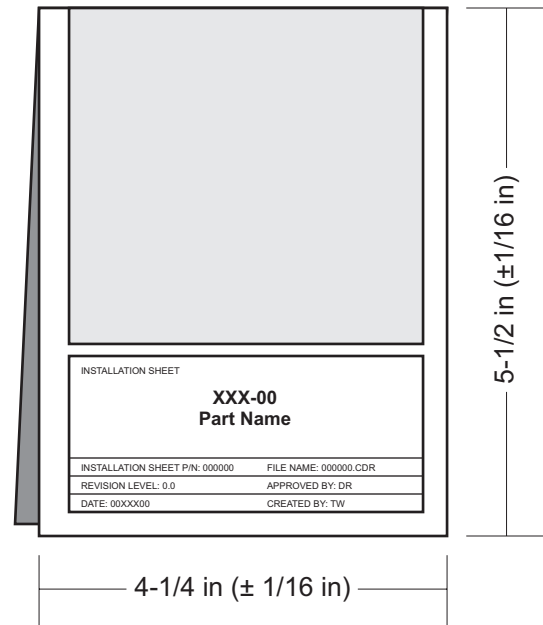
For: letter, portrait

One 8-1/2 in x 11 in sheet printed on one side.

Material is standard white offset stock.

Characters are black on white background.

Fold two times to the dimensions shown, with the part number on the outside.



INSTALLATION SHEET	
LSRA-SB Surface Mount Enclosure	
INSTALLATION SHEET P/N: 387623	FILE NAME: 387623.CDR
REVISION LEVEL: 1.0	APPROVED BY: K. Johnson
DATE: 07/10/00	CREATED BY: D. Miner
ECN: 00-S2035	